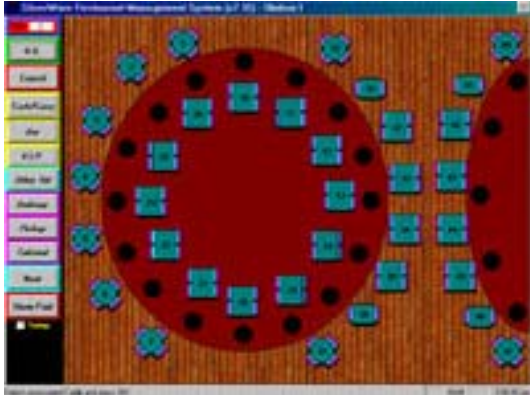

Silverware P.O.S. Restaurant Management System



Over View



- A POS System with Flexibility and Performance for people who like to do things their way. SilverWare is so configurable that it's like using a customized system.
- Customize every Terminal to operate separately, from Table Service, to Fast Bar, to Delivery, all in the same system.
- Design your Floor Plan to truly represent your Restaurant the way it is with Single or Multi Floors, Summer Patios, Separate Areas, and Special Layouts for special events.
- Powerful Reporting System using SQL to interrogate the detailed transaction database for the critical management information you need to run your Restaurant at its maximum potential and profitability. All reports export to Excel for even further analysis.
- Labour Scheduling makes it easy to organize your staff into regular daily and weekly work routines.
- Maximize your Table Turns with Table Management. Special color coding tells you whether a table is open, occupied, has a printed bill or is closed and waiting to be cleaned.
- The last word in menu item management. From Item Count Down, to alert Servers when an item is sold out, to Multiple Price Levels for each menu item, with independent tax status, for the ultimate in pricing flexibility.
- Keep track of your best customers with SilverWare's Extensive Client Database. Provide your customers with VIP Cards with special pricing. Let the system tell you what they like and how often they visit you and perhaps provide incentives for your most frequent, valued customers.
- Table View lets you stay in control of your Restaurant. See all open tables with full item detail with the exact time when each item was ordered. Clients at your restaurant will not be kept waiting.
- Empower your Servers with an "on screen" keyboard for entry of special instructions. Split a check or split an item with ease, or select left-handed, right-handed operation to suit, just to mention a few Server favorites.
- Hostess Reservation System, fully integrated with the POS, automatically keeps all Restaurant terminals up-to-date with the current table status at all times. Assign tables when taking the reservation or at any other time up to the arrival of guests. The system automatically alerts the Hostess of special guest requirements and service delays.

Customizable Restaurant Management Solutions at your Fingertips!

- Head Office Polling. Either through direct dial-up or via the Internet, keeps you fully informed on a day-to-day basis, no matter how many restaurants in your organizational.
- Our Integrated Inventory keeps tight control of your food costs with complete menu recipes, and details of purchases from all of your suppliers.
- SilverWare provides Interfaces and Links to Payroll Software, Hotel Front Desk Systems, Building Security Card Systems, Accounting Systems, Bar Controls and Pool Table Lighting.
- Manager Controls and Security are programmable right down to the feature level. Tight control on Discounts and Voids with special reporting to show the Manager/Server relationship on all types of voids and discounts.
- SilverWare guarantees Redundancy! If the main server goes down, the back-up server is activated immediately - you can continue business as if nothing happened. NOW THAT'S PEACE OF MIND.



Enterprise Management

With the Enterprise Management Module, large enterprises can consolidate information from any or all of their locations with the menu programming. Enterprise Management can offer a point system so that customers can earn bonus points no matter which location they visit.



TABLE MANAGEMENT

- Design your Floor Plan to truly represent your Restaurant the way it is with Single or Multi Floors, Summer Patios, Separate Areas, and Special Layouts for special events.
- Servers can easily place a new order just by touching the table the customers are sitting at, or with the touch of a button, staff can place a Cash 'n Carry, Delivery, Pickup, Takeout or Bar order. With table management, servers can also place orders directly to customer accounts or see a list of all paid tables. Managers also have the option to edit the floorplan permanently or temporarily.
- Move, add, remove, resize or renumber any table, any time, in just two easy steps.



HOSTESS & RESERVATIONS

The SilverWare Hostess Module is a powerful tool that allows it's users to:

- Organizes reservations.
- Indicate special reservation instructions such as a birthday.
- Change your floorplan temporarily or permanently.
- Assign sections to servers.
- Keep a history of your client's preferences.
- Find out the status of any table by it's colour.
- Receive a warning if an order is not placed on a seated table within a specified period time.
- Display items on a customers bill.
- Organize wait lists for walk-in customers who have not reserved a seat.



The Hostess Module is directly interfaced with SilverWare so any changes in either SilverWare or the Hostess Module will be instantly updated on both ends.

INVENTORY

Directly integrated with Silverware, the Inventory Control module performs the following:

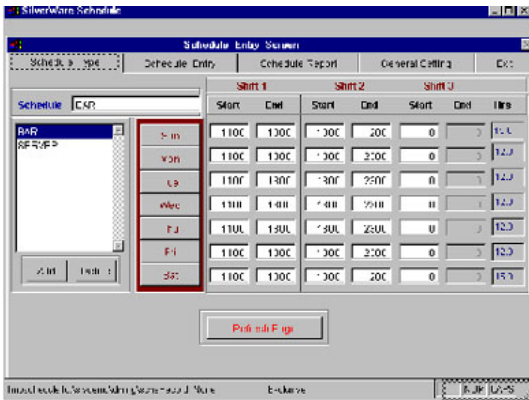
- Automatic update of Inventory quantities through Silverware sales.
- Produce Inventory report in many formats, including usage summary & detail.
- Access historical information on all Inventory items including Purchases, Adjustments, and Updated quantities.
- Generate and track Purchase Orders.
- Produce automatic re-order reports.
- Track supplier prices.
- Track last cost, average cost.
- Allow multiple suppliers for each item.
- Complete historical data.
- Create menu recipes to track item usage.
- Purchase order generation, tracking, receiving and history.
- Receive individual items or whole orders.



LABOUR SCHEDULING

Labor Schedule is an optional module designed to assist owners and managers in controlling labor costs.

Labor Schedule means you can create a detailed map of a particular job, recording the type of job, the days worked and the hours worked on each day. Labor Schedules can be copied for the coming week, and if you have to change schedules, you can use the blueprint schedule as a base for the new schedule.



Labor Schedule allows managers to:

- Create a schedule.
- Assign a general schedule to an employee.
- Fit the schedule to employees.
- Modify the employee's schedule.
- Create printable schedule reports.

Labor Schedule allows servers to:

- View their schedule.
- Print their schedule.